

Test your knowledge!

Trivia Quiz on the Digital Adventure of
the history and research of Ancient
Near East



1. Which three ancient Middle Eastern empires ruled during the first millennium BCE?

Sumer

Persia

Mesopotamia

Assyria

Egypt

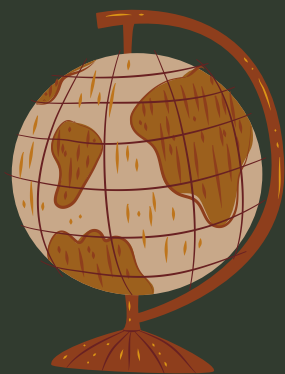
Babylon

2. Who developed cuneiform script?



A.

Assyrians



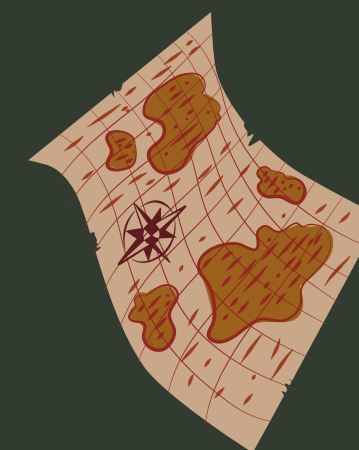
B.

Hittites



C.

Babylonians



D.

Sumerians

3. Reflect on the innovations or inventions from ancient Middle East that still have an impact in the present day.

4. Enheduanna is the first known author by name.

A rectangular button with a scalloped orange border. The background is a landscape of rolling hills under a hazy sky. The word "True" is written in bold black text in the center.

True

A rectangular button with a scalloped orange border. The background is a landscape of rolling hills under a hazy sky. The word "False" is written in bold black text in the center.

False

5. What is the meaning of provenance?

A.

Knowledge and research of an object's discovery and ownership history.

B.

The study of cuneiform script

C.

Study of an object's material

D.

Protection and enrichment of museum collections

6. Choose the right statements regarding the sarcophagus in the picture

- a.** The burial coffin was donated to President Urho Kekkonen in the 1970s
- b.** Georg August Wallin acquired the coffin in the 1840s
- c.** The coffin belonged to Ankhefenamun, an official of the Karnak temple
- d.** Today, the coffin belongs to the collections of Lappeenranta Museum



Photo: finna.fi, Finnish Heritage Agency, collection of Archaeological objects

7. Reflect

What is cultural heritage?

Which factors affect the preservation of cultural heritage and its destruction?

How can cultural heritage be protected?



8. The king Gilgamesh from the Epic of Gilgamesh was a real historical figure.

True



False

9. Reflect on what sparked the interest of Western scholars in the ancient Near East during the 19th century?

10. Connect

A. Georg August Wallin

B. Harri Holma

C. Karl Fredrik Eneberg

D. Hilma Granqvist

E. Aleksis Sahala

1. Clay cylinder of Nebuchadnezzar II

2. Participant observation

3. Egyptomania

4. Digitization of cuneiform texts

5. Dream of excavating Niniveh

