

How do I do it?

A few examples of a metal detectorist's logic

Taneli Leinonen, 2022

About detecting in Finland in general

- all finds older than 100 years are to be notified to the Finnish Heritage Agency (museovirasto)
- "Ilppari" onlineservice to supply find details to the FHA
- permit from the landowner is enough
- recommended to keep at least 200 m away from the known protected sites (by law 2 m)
- extra cautious approach to the searching in the forested areas
- no "overdigging"
- document the location according to best ability (photos, GPS). Marking the spot makes things easier for possible inspection later.
- FHA has a long delay (2019 finds are recorded now) in examining the finds properly –lack of resources and funding

Maps and databases

- <https://kartta.museoverkko.fi/>
 - primary tool for checking the restricted and protected areas
- <https://asiointi.maanmittauslaitos.fi/karttapaikka/>
 - better tools for mixing e.g. aerial view and LIDAR
- <https://www.retkikartta.fi/>
 - only database to feature ALL nature conservation areas
- <https://vanhatkartat.fi/>
 - tool for merging modern maps to older ones e.g. the Senate Atlas (1870-1907)
- <https://maps.arcanum.com/>
 - split view to Senate Atlas and street maps or aerial view
- <https://www.kyppi.fi>
 - other information; archaeological excavation and field survey reports etc.
- <https://dev.loytosampo.fi/fi/>
 - does not work properly with the GPS. Useful for checking the recommended 200 m safety zone for restrictions if needed





Observing the terrain and nature

- local knowledge
- testing hypotheses – hit and miss
- following possible water and land routes
 - dry feet = a happy traveller
 - connecting land bridges and detours to avoid dangerous passages
- observing and following the animal tracks
 - hunting and trapping locations can be the same as in prehistoric times
- everything is not what it seems
 - post glacial rebound and the changes in the water bodies and groundwater levels
 - effects of mechanized forestry and hydroelectric plants



My finds from Neittävä and Nimisjärvi areas in Vaala.

Fire steel

- A fire steel from the southeastern corner of the Pyöriäsuo swamp.
- old path on a sand dune ridge between swamps
- some small bronze vessel bits from nearby
- in northern Finnish context considered to be possibly medieval
- the swamp looked like an ancient lake
- idea for further inspection along the same path

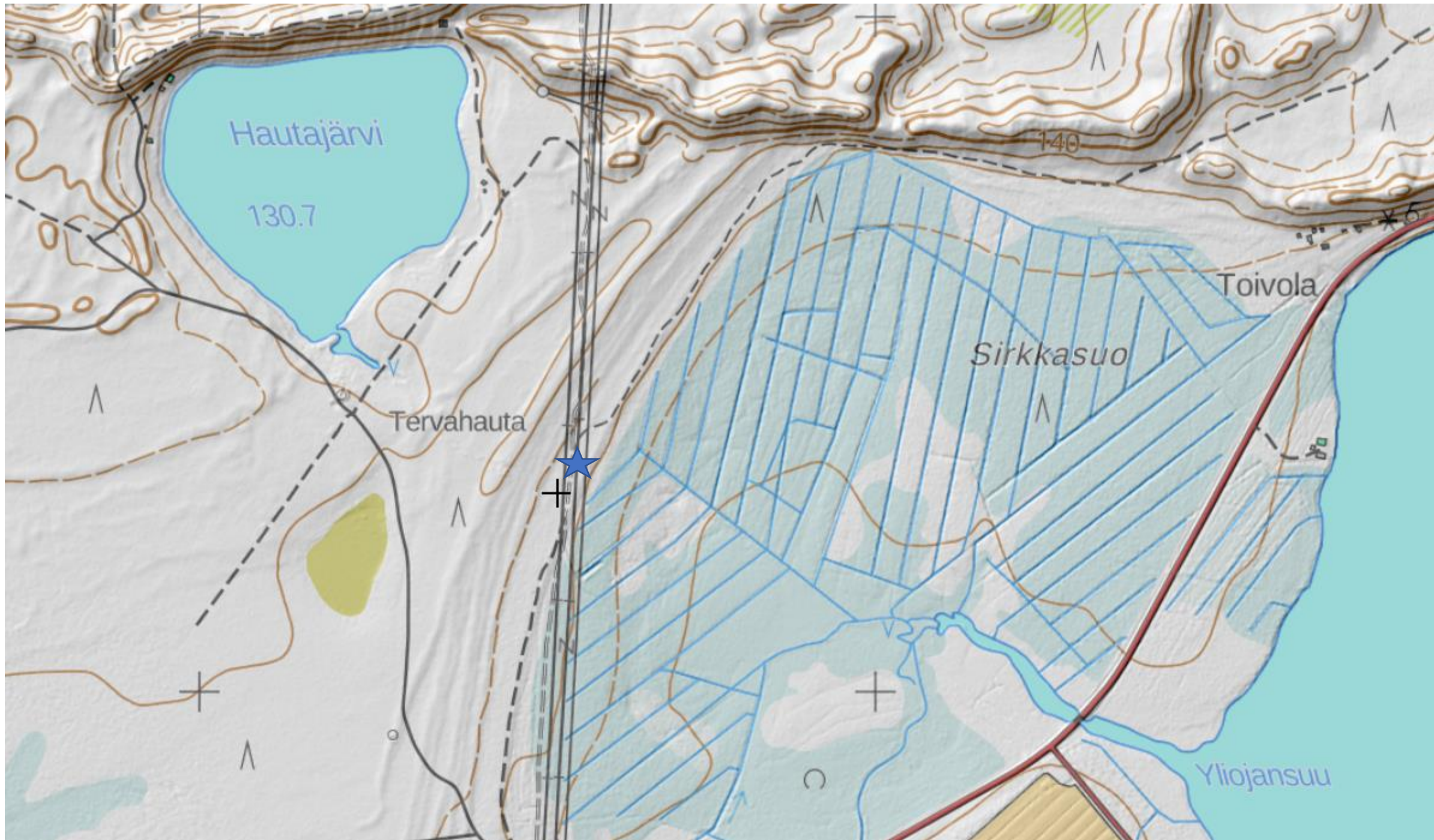






Flat headed arrow

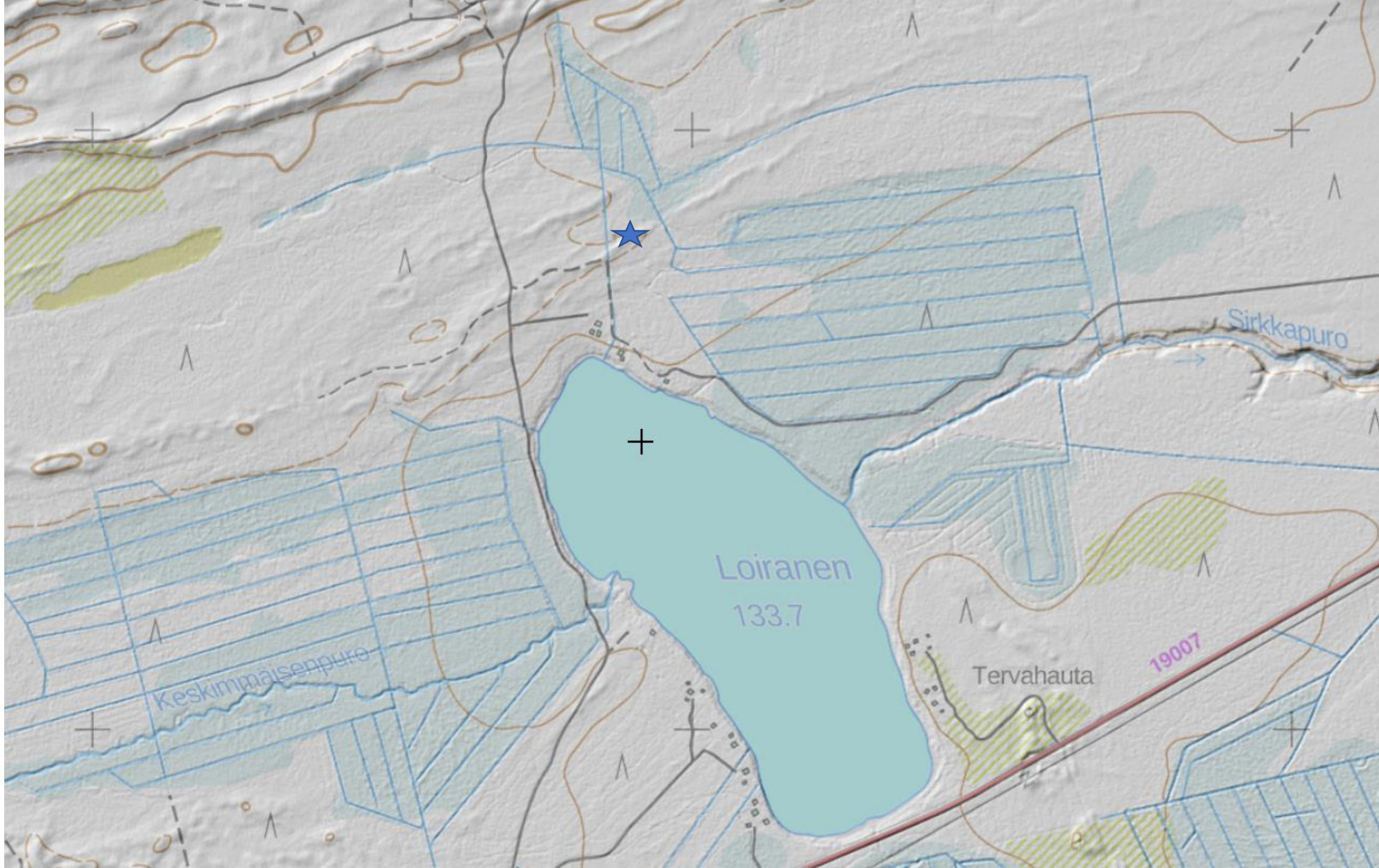
- A flat headed arrow from the west side of Sirkkasuo swamp, Vaala
- deer (*Rangifer tarandus fennicus*) tracks spotted
- following the tracks and finding the arrow and a large, cut piece of bronze vessel.
- the arrow possibly of Viking age type. Earlier and later dating also possible
- trapping pits about 500 m away
- site inspected later by professionals – remains of a hearth discovered on the spot, not dated yet



“Four bladed” arrowhead

- arrowhead found north of lake Loiranen by a swamp
- the wide stem is sharpened from the sides
- most likely a stray find
- sheer luck – nothing else in the vicinity
- previously unknown trapping pits discovered around the same swamp later
- a low sand dune ridge connecting three lakes – possible path for hunters and fishermen





“Spike point” arrowhead

- a relatively small and narrow arrowhead found southeast of lake Hautajärvi
- a bronze pot handle from a few meters away
- possibly later dating than the other arrows
- another example of following deer tracks



Hautajärvenvaarat

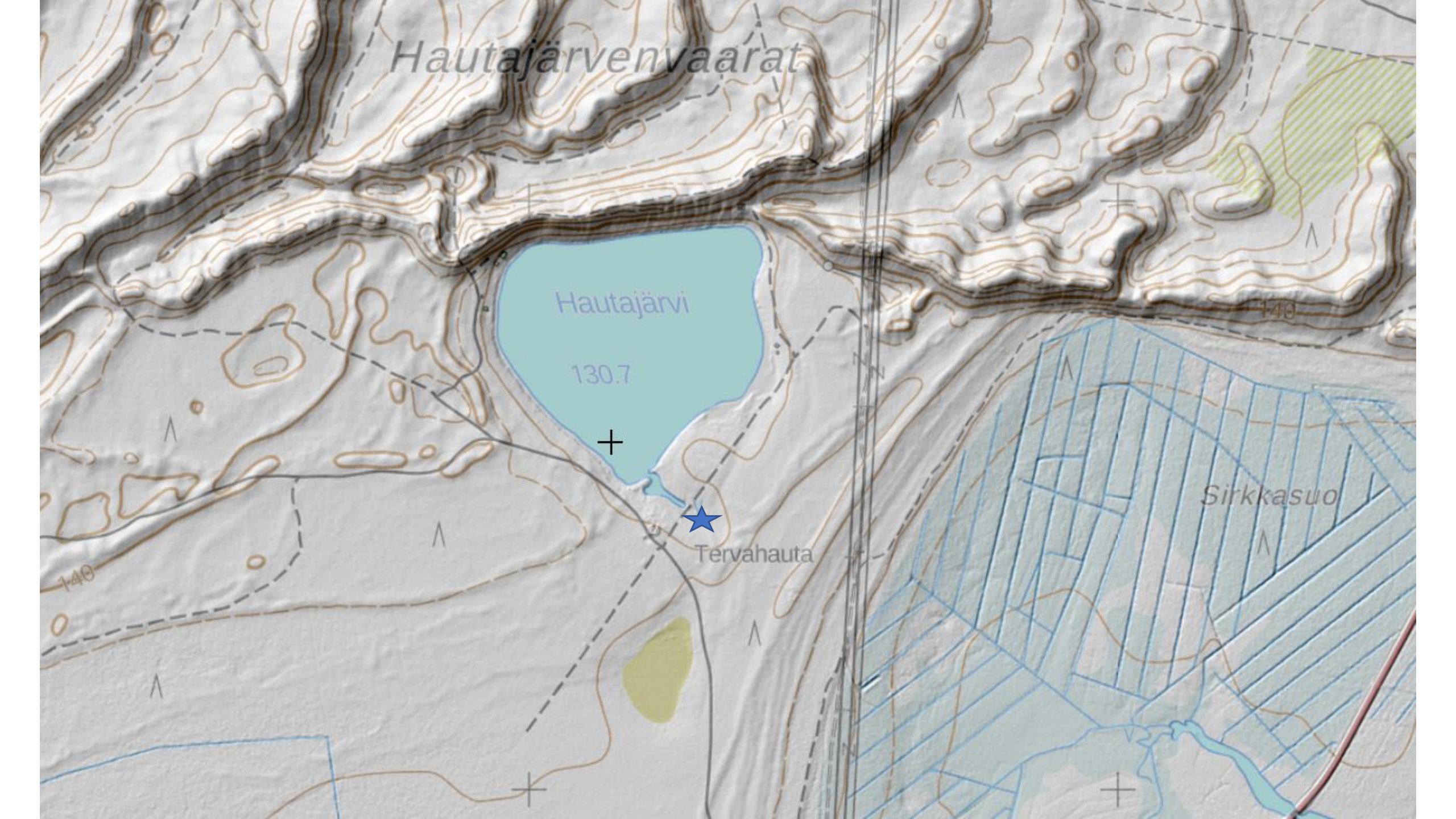
Hautajärvi

130.7



Tervahauta

Sirkkasuo



Horseshoe-fibula

- a small late Viking age horseshoe-fibula from the north side of Pyöriäsuo swamp, Vaala.
- a piece of burned bone spotted on the ground nearby
- a few other metal signals left in the ground untouched
- the first pre-historic burial site from the region
- has Pyöriäsuo been a lake?
- is there a land route around the dangerous parts at the beginning of the Oulujoki river?





8,692 km

Horseshoe fibula, others

Piece of buned bone discovered near the
fibula on the surface





Pyöriäsuo

Isosuo

Lahdesuo

800

19007

Puhakka

Raappana

Hietalahti

k. asuinp.

vuonporä

What happens next?

- only two of these sites have been inspected by the Oulu regional museum professionals
 - one finding spot was not found during the inspection
- both have been protected
- others are waiting for actions
- most likely stray finds or traces of hunter's temporary huts or lavvús
- another burial site found this summer by another detectorist
- previously the western side of lake Oulujärvi has been almost empty from the iron age or medieval finds
- lack of interest in the region from both archaeologists and hobbyists
- lot of interesting places archaeologically – more work for me in the future

Thank you!