



Who owns the coins? The importance of creating a portal for numismatic data and coin finds in Finland.

Bergen Workshop 2022: Current opportunities in public archaeology research - Uses and Users of the Data

Frida Ehrnsten (National Museum of Finland) & Eljas Oksanen (University of Helsinki)

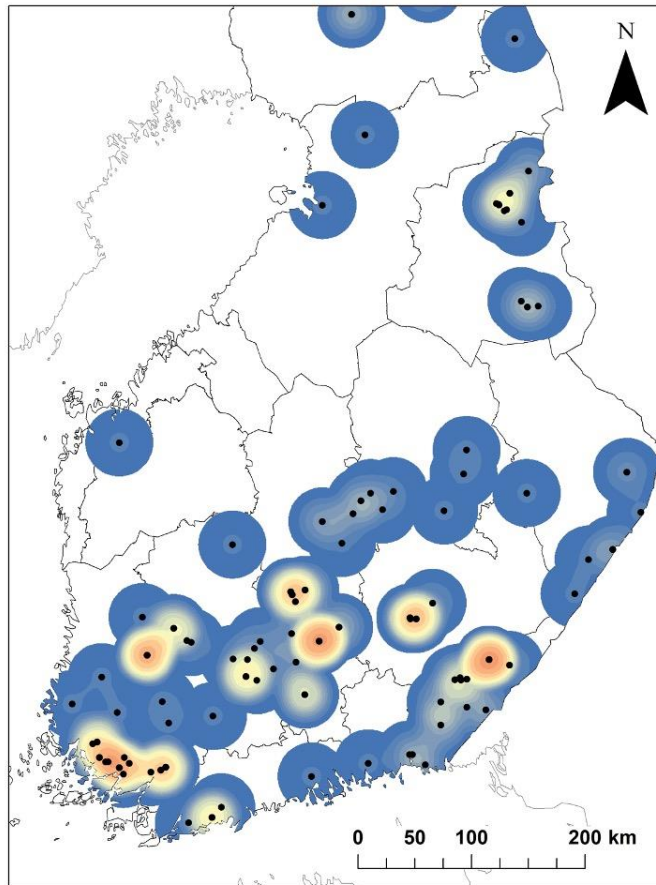
6.10.2022



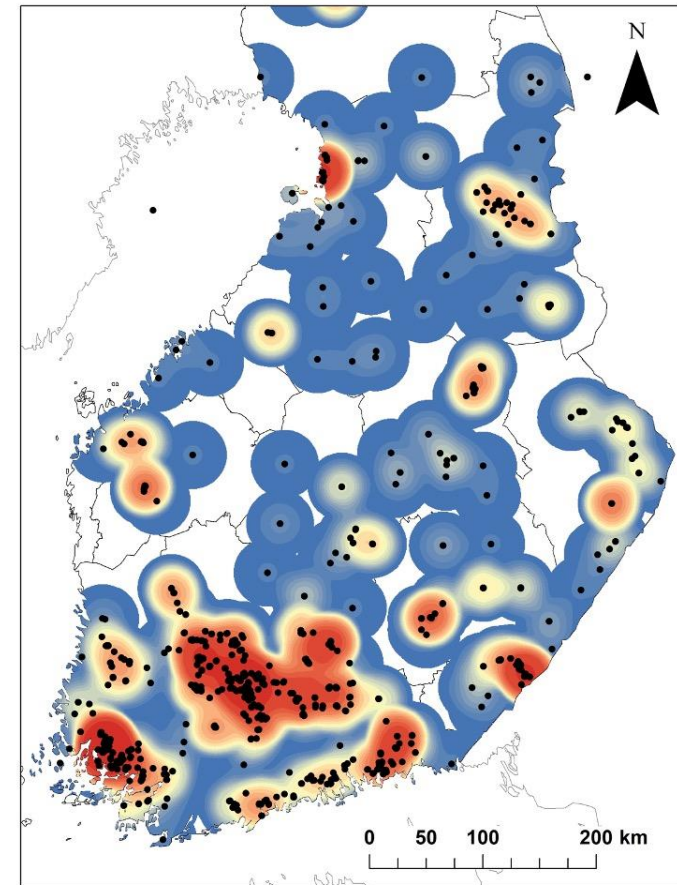
Numismatic collections in the National museum of Finland

- Oldest part of the collection mid-18th century.
- Coin finds from the mid-19th century.
- C. 250 000 objects.
- Digitization started in 2012:
 - CMS MPlus: c. 45 000 objects.
 - Photographed: c. 10 000 objects.
 - Old main catalogues: c. 100 000 objects.
 - Uncatalogued: c. 100 000 objects.

Metal- detecting in Finland



2000-2010:
349 new
public finds
taken into the
national
collections

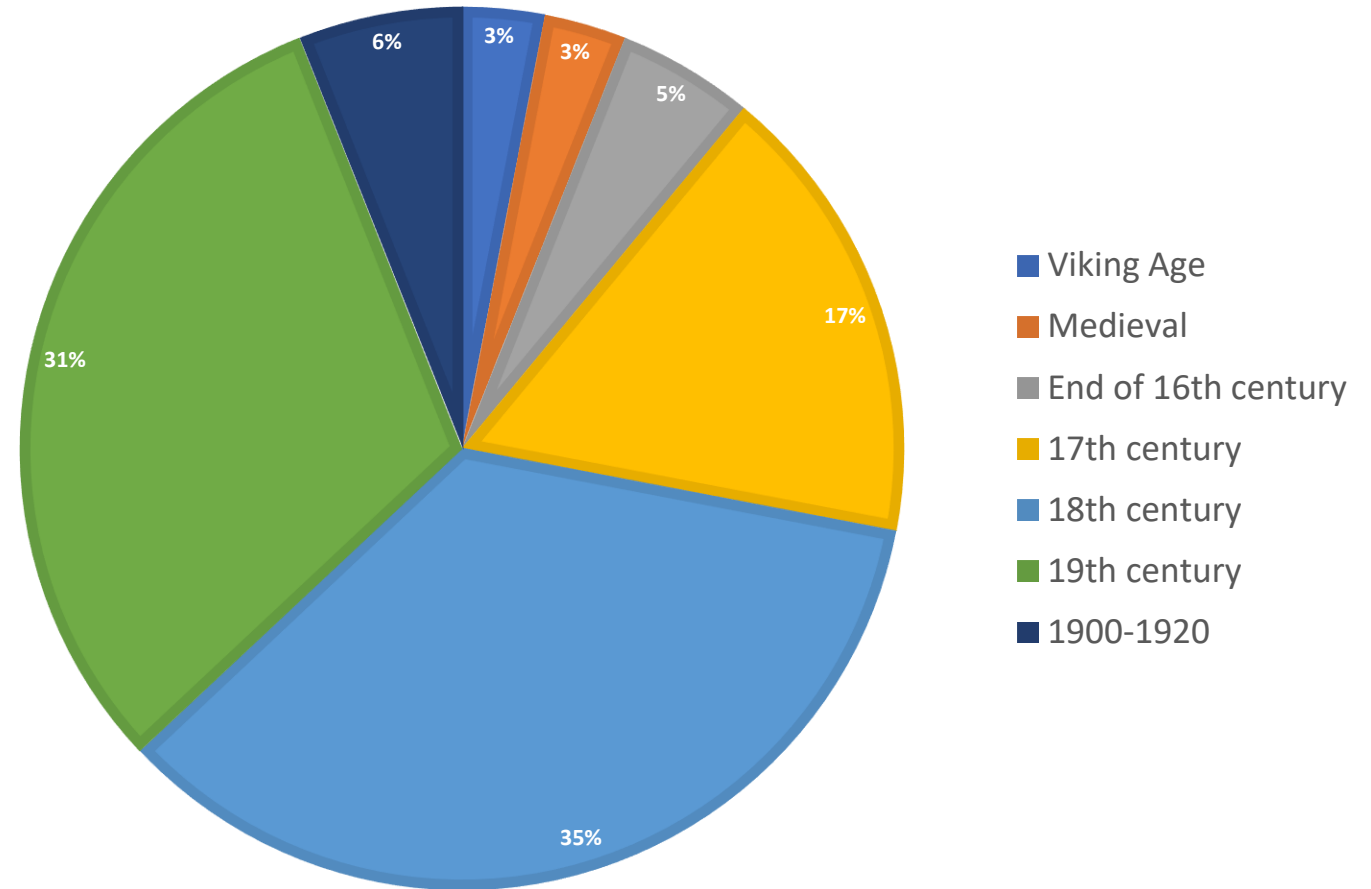


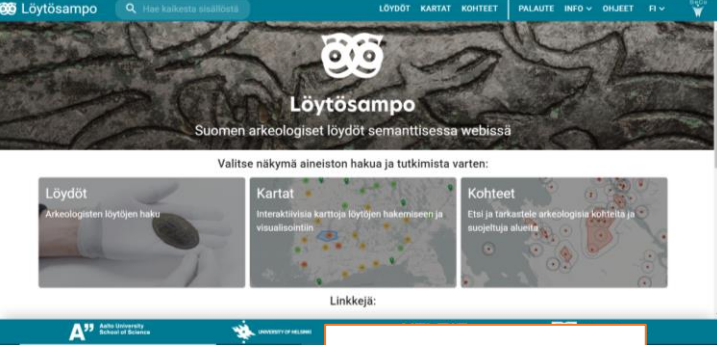
2015-2017:
3080 new
public finds
taken into the
national
collections

ILPPARI

- An online service for reporting amateur archaeological findings, launched in 2019.
- Facilitates administrative processes in the management of stray finds.
- 2020: 4600 coins, 2021: 3000 coins.

CHRONOLOGICAL DISTRIBUTION OF COIN FINDS





FindSampo

COLLECTIONS MANAGEMENT

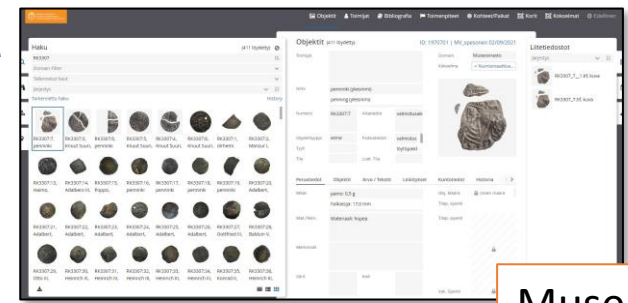
Archaeological collections database

Handwritten records

Various Excel tables

Etc, etc

Old printed catalogues

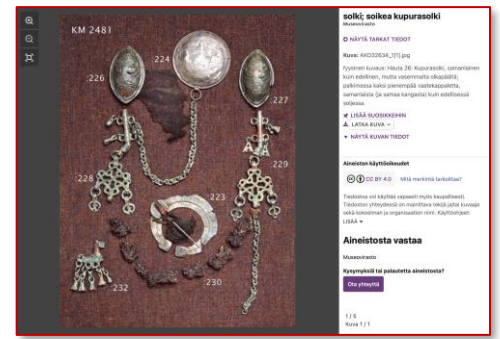


MuseumPlus

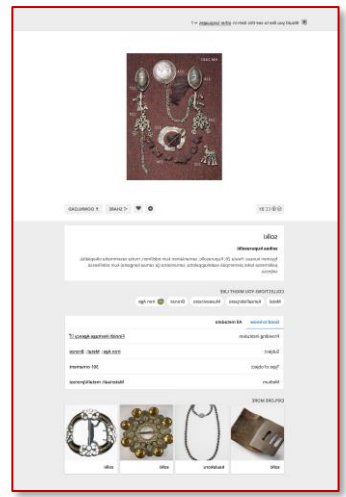


Ilppari

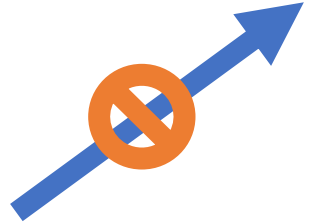
OPEN DATA



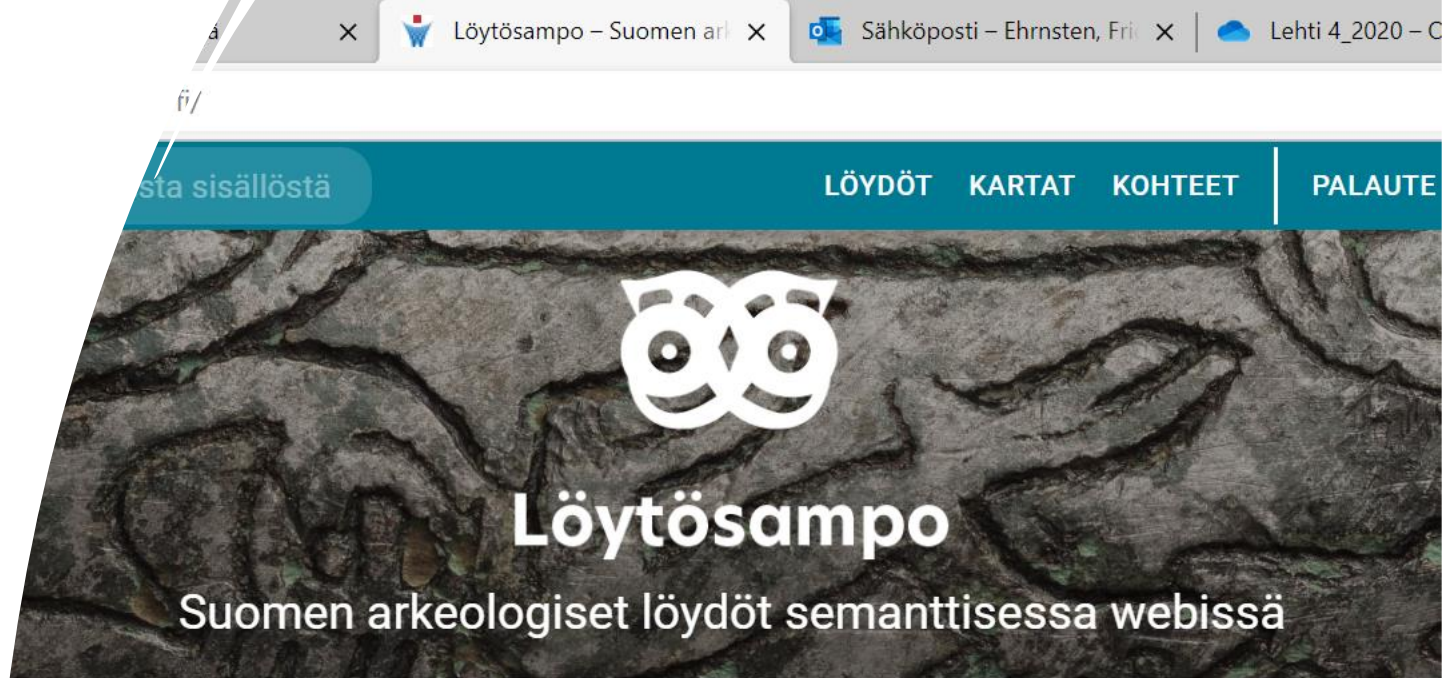
Finna.fi



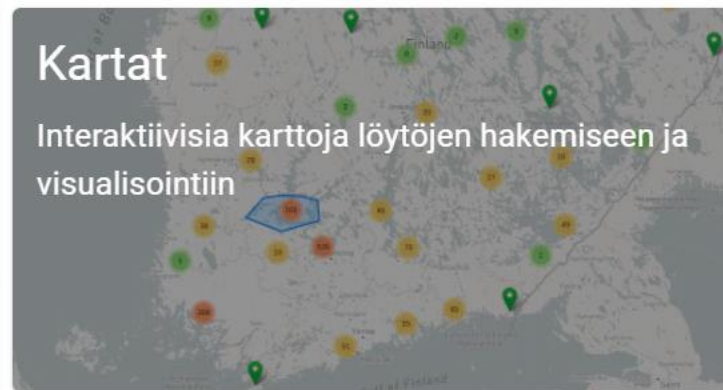
Europeana.eu



FindSampo



Valitse näkymä aineiston hakua ja tutkimista varten:



Linkejä:





DigiNUMA

AIMS

- 1) **DESIGN DIGITAL SOLUTIONS SUITED SPECIFICALLY FOR ARCHAEOLOGICAL CULTURAL HERITAGE MANAGEMENT**
- 2) **INCREASING ACCESSIBILITY OF ARCHAEOLOGICAL CH DATA WITH SPECIFIC REFERENCE TO NUMISMATIC DATA**
- 3) **FURTHER DEVELOPMENT OF INTERNATIONALLY OPERABLE LOD INFRASTRUCTURE FOR CH DATA**

University of Helsinki & Aalto University
2022-2023

In collaboration with
The National Museum of Finland
Finnish Heritage Agency
The British Museum
Nomisma.org

LIST VIEW

Results: 348 finds

Active filters: REMOVE ALL

Object type: raha 8 | Dating: 800 to 1150 2

Narrow down by:

Text search 1

Object type 1

Material 1

Place 1

Dating 1





Min year: 800 | Max year: 1150 APPLY

Period 1

Length 1

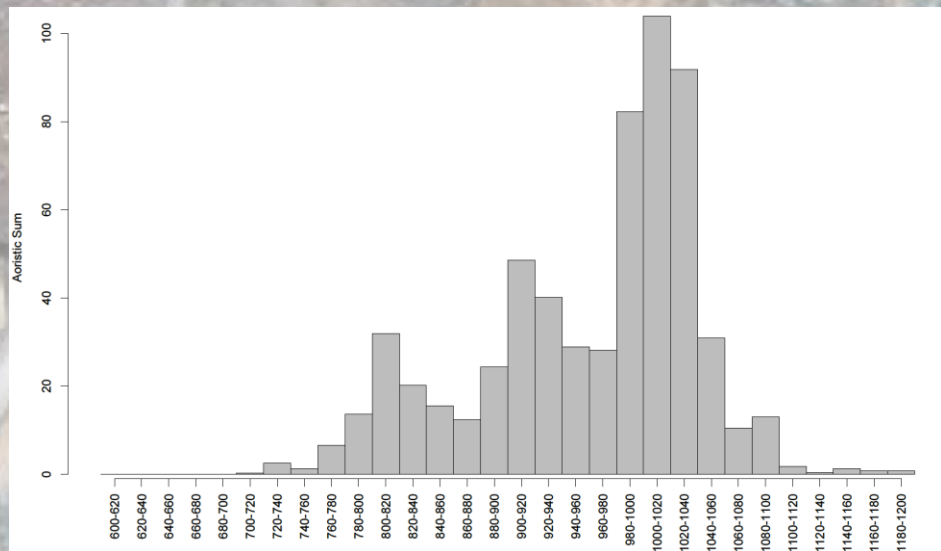
Width 1

Weight 1

Find name	Accession number	Object type	Material	Province	Municipality
	Hopparaha KM40393:1	metalliraha	hopea	Varsinais-Suomi	Kaarina
	Hopparaha KM40393:10	metalliraha	hopea	Varsinais-Suomi	Kaarina
	Hopparaha KM40393:11	metalliraha	hopea	Varsinais-Suomi	Kaarina
	Hopparaha KM40393:12	metalliraha	hopea	Varsinais-Suomi	Kaarina

Viking Age coin finds from the Finnish Heritage Agency collection

STATISTICAL TOOLS



Temporal distribution of Finnish coin finds during the Early Middle Ages

MAP VIEWS

CoinSampo Search all content

Coin Finds i

Results: 85 coins

Active filters: REMOVE ALL

Denomination: Denga x

Narrow down by:

Denomination i

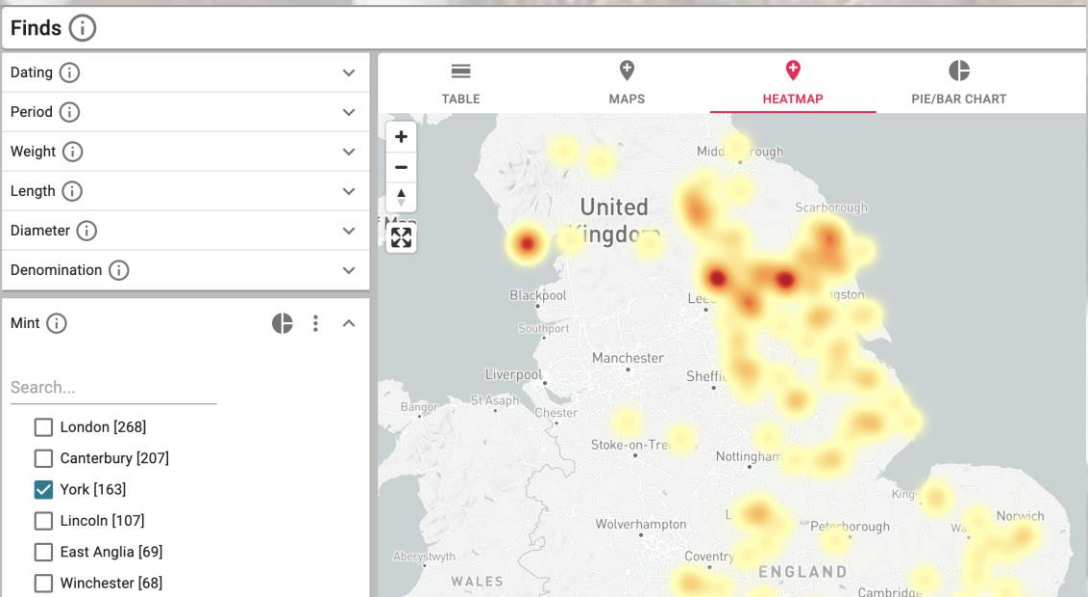
Search...

- 1 taaleri SM (hätäraha) [103]
- 1 äyri [91]
- Denga [85]
- 1/4 killinkiä riksgälds [81]
- 1 killinki [67]
- 5 äyriä [62]
- 1/2 äyrin klippinki [55]
- Unknown [51]
- Fyrk [50]

TABLE | MAP | HEATMAP

© Mapbox © OpenStreetMap Improv

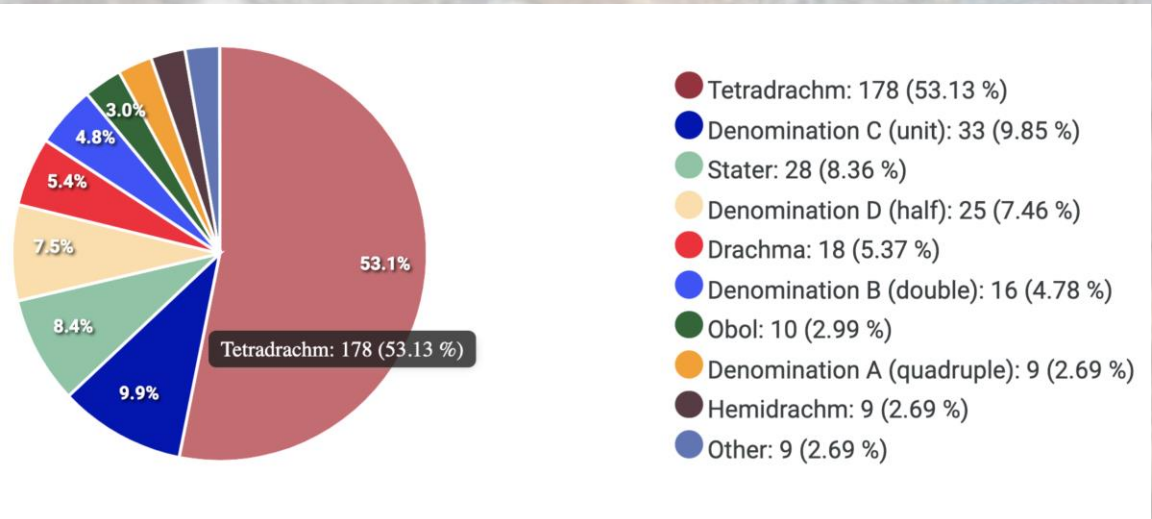
Spatial distribution of Russian dengas in Finland



MANY DIVERGENT DATA STRUCTURES
 UNIQUE SERVICES BUILD AROUND EACH...

A change in development paradigm?

Unique data = unique service instance
 CoinSampo with Early English (AD 710-1070) coins minted in York
 Data: The British Museum / Portable Antiquities Scheme



...OR ONE COMMONLY ACCEPTED DATA MODEL
 A SINGLE SERVICE ABLE TO HANDLE MANY DIVERSE DATASETS?

Shared data model = one service for many datasets
 Seleucid coin types from the mint of Susa
 Data: Seleucid Coins Online, confirming to nomisma.org paradigm

nomisma.org

Who owns
the coins?





The importance of creating a portal for numismatic data and coin finds in Finland

- There is a good basis for creating an internationally comparable database.
- Crowd-sourcing could assist in solving current chm challenges.
- A step towards citizen science and participatory cultural heritage approach...
- ... enriches and contextualises research data...
- ...but requires the development of new workflows and technologies designed for the specific character of the data.
- **COLLECTIONS BELONGS TO ALL: INCREASING THE DEMOCRATISATION OF CULTURAL HERITAGE**

THANK YOU

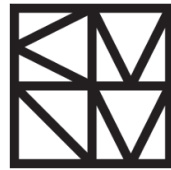
Eljas Oksanen
Frida Ehrnsten

University of Helsinki
National Museum of Finland

eljas.oksanen@helsinki.fi
frida.ehrnsten@kansallismuseo.fi



HELSINGIN YLIOPISTO
HELSINGFORS UNIVERSITET
UNIVERSITY OF HELSINKI



KANSALLISMUSEO
NATIONALMUSEUM



Aalto-yliopisto
Aalto-universitetet
Aalto University



Semantic Computing Research Group (SeCo)

Making computers and the web more intelligent and interoperable!

