



# Creating a research and educational **Institute of Detectorists**

**Keith Westcott**

Historian, Detectorist and Archaeologist



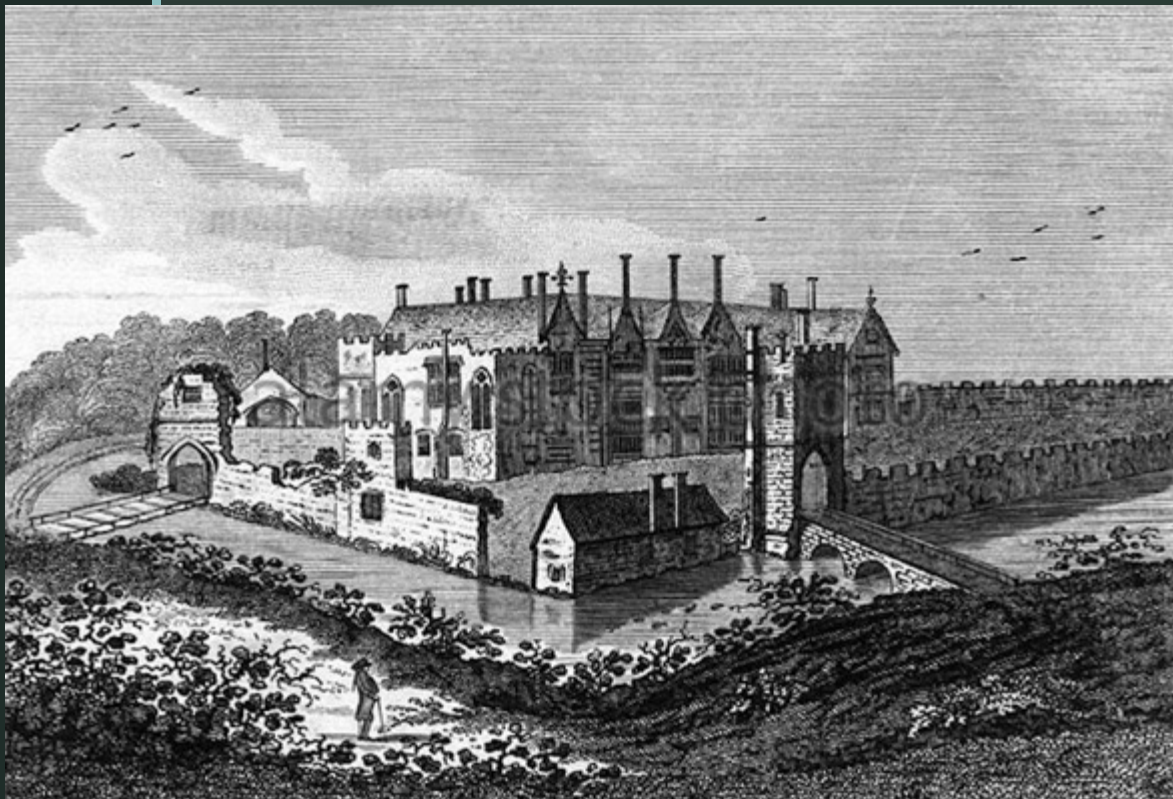


Cambridge  
Dictionary

## DETECT

to notice something that is partly hidden or not clear,  
or to discover something, especially using  
a special method:





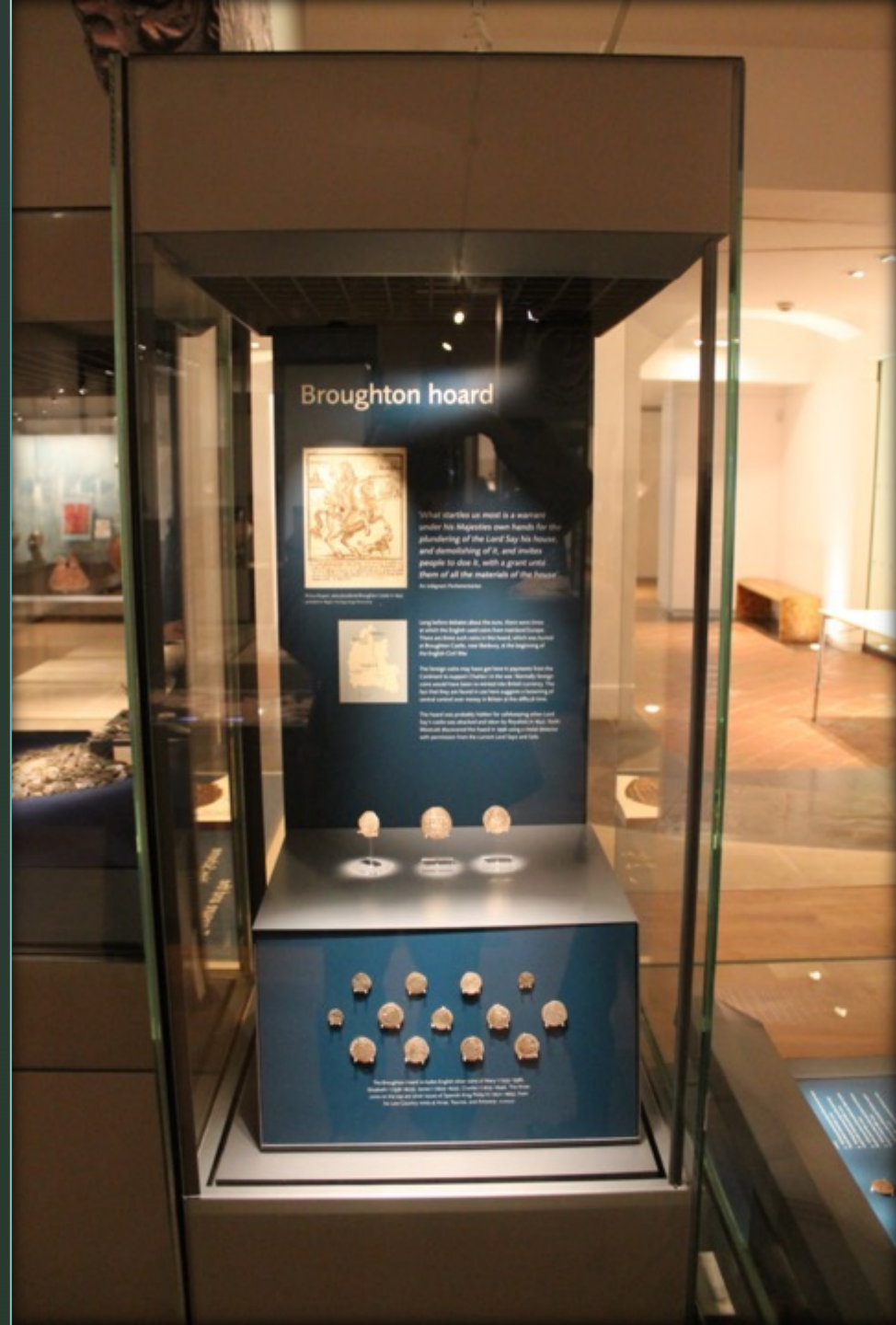
# THE BRITISH NUMISMATIC JOURNAL 1998

INCLUDING THE

*Proceedings of the British Numismatic Society  
for the year 1998*

EDITED BY

N.M.McQ. HOLMES



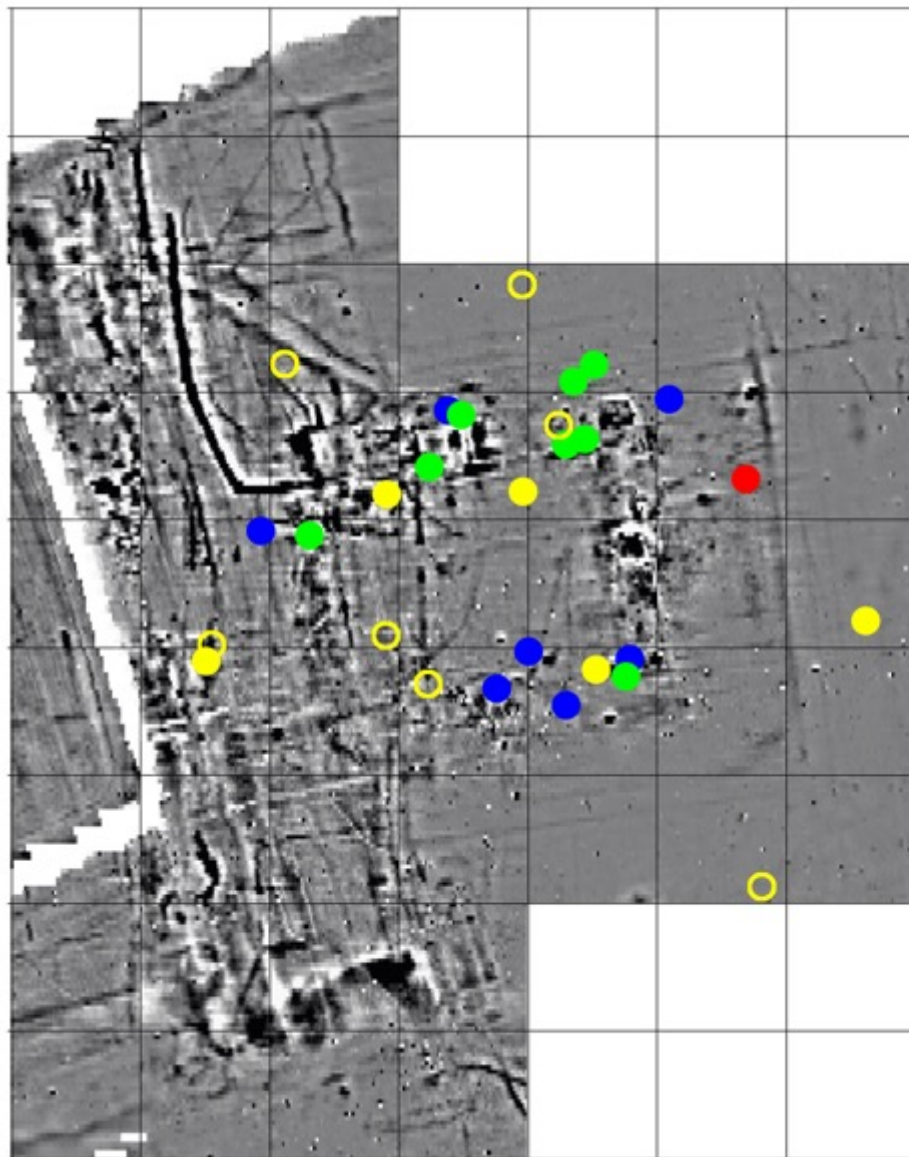












- 1st Century
- 2nd Century
- 3rd Century
- 4th Century
- Undated





**PAYMENT**  
We no longer accept card details by post.  
You can pay by cheque (payable to OUDCE) or  
by going online - see below.

**ENROL ONLINE** by adding the course code  
O18P141AHU to the end of the URL for the  
Department's website:  
[www.conted.ox.ac.uk/O18P141AHU](http://www.conted.ox.ac.uk/O18P141AHU)

If paying by cheque, please send this form with  
your payment to the

Day and Weekend Programme Office  
OUDCE, Rewley House, 1 Wellington Square,  
Oxford, OX1 2JA.  
Email: [ppdayweek@conted.ox.ac.uk](mailto:ppdayweek@conted.ox.ac.uk)  
Telephone 01865 270380

**CONCESSIONARY FEES** for day and weekend events are  
now available for people on low incomes. If you are in receipt  
of a state benefit or your sole source of income is a DWP  
State Retirement Pension and Pension Credit you may be  
eligible for a reduction of 50% of tuition fees. For conditions  
and an application form go to <https://www.conted.ox.ac.uk/about/concessionary-fees-for-short-courses>

**CANCELLATIONS AND REFUNDS**  
Fees will only be refunded in exceptional circumstances and  
all refunds will be subject to a £20 administration charge.

Refund requests should be made, in writing, to the Manager  
of Public Programmes, OUDCE, 1 Wellington Square,  
Oxford, OX1 2JA, or by emailing  
[ppdayweek@conted.ox.ac.uk](mailto:ppdayweek@conted.ox.ac.uk)

The Department reserves the right to cancel courses with  
insufficient enrolments and the decision to do so is usually  
made 2 weeks before a course is scheduled to run. In such  
cases students are refunded in full. The Department cannot  
be held responsible for accommodation or travel booked in  
advance.

METAL DETECTING FOR ARCHAEOLOGICAL PROJECTS:  
AN INTRODUCTION O18P141AHU

## Metal Detecting for Archaeological Projects: An Introduction

A day school to be held at  
Rewley House, 1 Wellington  
Square Oxford

Of interest to the detectorist and archaeologist,  
this course looks to explore how the metal  
detector and detectorist practitioner can  
become an important element in the processes  
of archaeological mitigation. We will evaluate  
how 'stratigraphy' and 'context' relates the 'Code  
of Practice' through to an understanding of  
archaeological investigation and recording in the  
planning process. We look at typical documents  
such as method statements and the Written  
Scheme of Investigation, to what will be required  
and expected of the detectorist when on site  
and further preparation and reporting for pre and  
post site attendance. This introductory course  
will cover specific survey methodologies such  
as PDAS: Partial and Detailed Artefact Surveys  
and will be the precursor to further courses that  
focus on the embedding of metal detector use  
into professional practice.

With the intention of becoming a Research and Educational  
Institute, the Association of Detectorists have been  
establishing the body over 18 months with overwhelming  
support from archaeological and heritage bodies and  
institutes. Our aim and mission is in developing a  
national educational program based on archaeological  
and conservation principles, we look to encourage  
detectorists whose motivations are based in the research  
and preservation of our National Heritage. With courses to  
enhance the 'hobbyists' awareness of 'contextual landscape'  
to the highest level of 'consultant practitioner', which focuses  
on embedding metal detecting into professional practice and  
creating a UK 'Bank' of consultant detectorists, to assist on  
archaeological projects.

To find out more visit our website:  
<http://www.detectorists.org.uk>

## Course Director & Tutor

### KEITH WESTCOTT

Keith, initially through diving on ship wrecks,  
developed his interest in historical research  
and has been 'metal detecting' for over 25  
years. His discovery of the Broughton Hoard,  
on display in the Ashmolean, was the last case  
in the Oxford Crown Court of Common Law  
'Treasure Trove', which led the British  
Numismatic Society to relating the Spanish  
coins to Charles I and Queen Henrietta  
Maria. Through adopting archaeological  
principles and in forming a theory, Keith set  
out in 2016 to look for a high status Roman  
building. What he discovered exceeded all  
expectations, one of England's previously  
undiscovered 'Great Courtyard Villas'.

### Director of Studies

#### DR ALISON MACDONALD

Departmental Lecturer in Archaeology,  
OUDCE

**Accommodation** is sometimes available in Rewley  
House for those who wish to stay on the night before a  
course. Please telephone our Residential Centre for  
further information on 01865 270380.

Photo on front cover: Courtesy of Oxford Archaeology.

#### Study online @ Oxford University

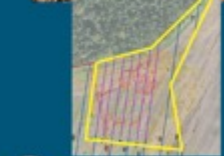
We offer short courses in Anthropology,  
Archaeology, Architectural History, Art History,  
Astronomy, Biology, Creative Writing, GIS,  
History & Politics, Language & Cultural Studies,  
Literature, Local & Social History, Mathematics,  
Philosophy, Political Economy, Psychology,  
Religious Studies, & Study Skills.

[www.conted.ox.ac.uk](http://www.conted.ox.ac.uk)

UNIVERSITY OF  
OXFORD

## Metal Detecting for Archaeological Projects: An Introduction

SATURDAY 24 NOVEMBER 2018



Held in association with  
The Association of Detectorists

DEPARTMENT FOR CONTINUING EDUCATION

### ENROLMENT FORM

Name

Address

Postcode

Daytime Tel.

Email

Please keep me informed about the Department for Continuing  
Education courses, research and open days  
by post ☐ Or by email ☐ (Please tick to opt in)

I agree to the terms and conditions ([www.conted.ox.ac.uk/courses/terms\\_and\\_conditions.php](http://www.conted.ox.ac.uk/courses/terms_and_conditions.php)) ☒

and I accept the student contract ([www.conted.ox.ac.uk/courses/student\\_contract.php](http://www.conted.ox.ac.uk/courses/student_contract.php)) ☒

SIGNED  DATE

**FEE OPTIONS**

With full lunch	£81.00	<input type="checkbox"/>
With baguette lunch	£71.90	<input type="checkbox"/>
Without lunch (includes 1/2)	£67.00	<input type="checkbox"/>
Vegetarian option (meal or baguette?)		<input type="checkbox"/>
Do you have a disability or special need?		<input type="checkbox"/>
If so, please state your disability / special need		

Course dispenses

PTO



## Archaeology: values, benefits, and legacies. Cifa2019 Annual conference and training event 24 - 26 April 2019, Leeds

### SESSION: COMMUNICATING THE VALUES OF ARCHAEOLOGISTS TO DETECTORISTS AND EMBEDDING METAL DETECTING INTO PROFESSIONAL PRACTICE

26 April 2019 - 11.30am to 1.00pm and 2.00pm to 3.30pm

Organiser and Chair: Keith Westcott, The Association of Detectorists (IoD Initiative)

Contact: [info@detectorists.org.uk](mailto:info@detectorists.org.uk)

CIFA

Chartered  
Institute for  
Archaeologists

### Certificate of attendance

This is to acknowledge that

XXXX XXXXXXXXXX

attended a CIFA training course entitled  
Metal Detecting for Archaeological Projects: an  
introduction

The course was organised and run by  
The Association of Detectorists &  
OUDCE

on 24 November 2018

Attendance at this course, if relevant to your professional  
development aims, counts as 5 hours of CPD

Congratulations on completing the course

Course convenor

Keith Westcott

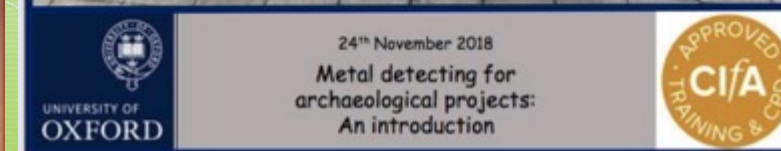
Peter Hinton, CIFA Chief Executive

PdH

Chartered Institute for Archaeologists  
Power Steele Building, Wessex Hall, Whiteknights Road,  
Earley, Reading RG6 6DE  
T: 0118 966 2841 / [admin@archaeologists.net](mailto:admin@archaeologists.net) / [www.archaeologists.net](http://www.archaeologists.net)

ALGAO is keen to support your  
initiatives. We see the proposed training  
courses as a way of embedding metal  
detector use into professional practice. It  
will be particularly important to include  
clear understanding of archaeological  
evaluation and mitigation recording in the  
planning process, and to ensure that  
detectorists working in these projects  
work to a clearly defined specification,  
such as you have outlined, to support the  
aims of the project. ALGAO can certainly  
help with support and guidance on this  
aspect, spread awareness of the training,  
and encourage the use of standard  
specifications among our members.





2019 Highly Commended: University College London –  
Institute of Archaeology



# James Madison's, Montpelier



## Hot Spot Analysis

### 1 Wrought Nails



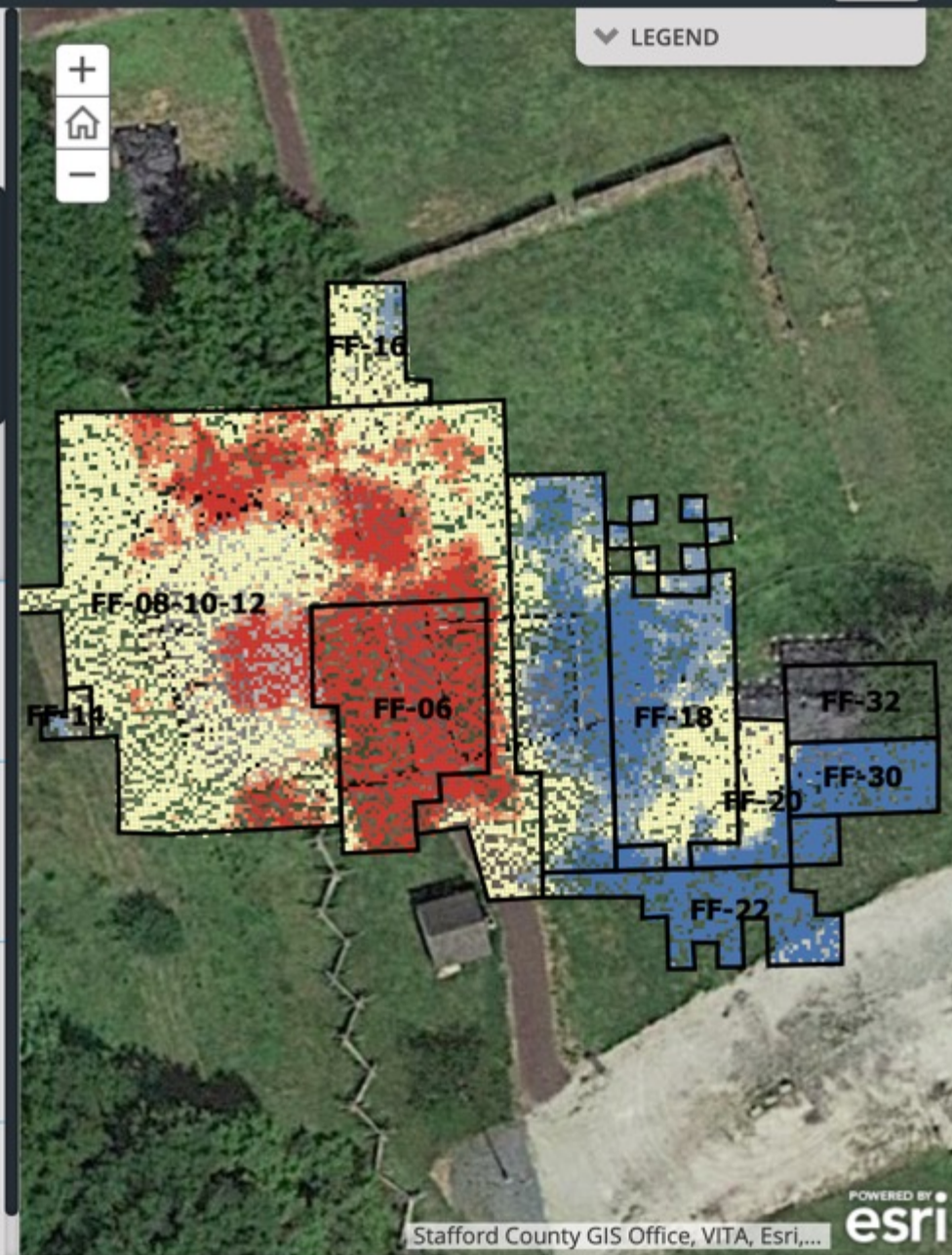
NOT FF hand-wrought-nails.jpg

### 2 Wig Curlers

### 3 Dipped Creamware

### 4 Tin Glazed Earthenware

### 5 All Artifacts Combined





# The DaPAS Approach

## Detailed + Partial Artefact Survey





Stakeholder Members
Chartered Institute for Archaeologists
National Farmers Union
Association of Local Government Archaeological Officers
Federation of Archaeological Managers and Employers
Country Land and Business Association
Society for Museum Archaeology
The Institute of Conservation
The Battlefields Trust
The National Trust
The Crown Estate
Treasure Trove Scotland
National Museums Wales
National Museums Northern Ireland
Observers
Historic England
Department of Digital, Culture Media and Sport
National Monuments Service, Ireland
Historical Environment Scotland
Cadw
NI Historic Environment Division, Department for Communities

## Historic England Research Report Series - 46/2021

### 7851 The Institute of Detectorists

Project Design to undertake a feasibility study and business plan for the proposed development of an institute for metal detecting

### 7851 The Institute of Detectorists

Feasibility study for the proposed development of an institute for metal detecting

PART ONE - REPORT

### 7851 The Institute of Detectorists

Feasibility study for the proposed development of an institute for metal detecting

PART TWO - APPENDICES

### 7851 The Institute of Detectorists

Feasibility study for the proposed development of an institute for metal detecting

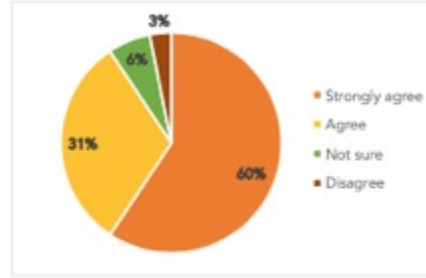
PART THREE – CONSULTATION



There is a need for training about responsible metal detecting

Strongly agree	19
Agree	10
Not sure	2
Disagree	1

The majority of respondents agree with the need for training about responsible detecting, although with a greater split between agree / strongly agree.



23

## Random Searching for casual losses



JUST SAY NO TO THE IOD



### The AofD Advisory Board

The interest of metal detecting has many stakeholders from manufacturers to rally organisers, media businesses to distributors and dealerships. All play a part and can influence a positive and responsible approach, affecting how metal detecting is perceived from inside and outside of the hobby.

Our mission to develop and promote best practice comes from the heart of metal detecting. With the Heads of the leading Media and Manufacturer/Distributors forming the Advisory Board, the interests of detectorists, the heritage sector and the wider society, will be balanced for the good of responsible metal detecting across participating countries.

AofD - receiving advice from key detectorist stakeholders

### The AofD Advisory Board Members

- Keith Westcott - AofD Chair
- Pete Turrell - Leisure Promotions
- Nigel Ingram - Region
- Craig Allison - Crawfords
- Luke Mahoney - Joan Allen
- Harry Bain - The Searcher Magazine
- Dan Goldbourn - Treasure Hunting Magazine
- Dave Sadler - The Big Detecting Show
- Mark Becher - Detectorists Digs and Rallies Group









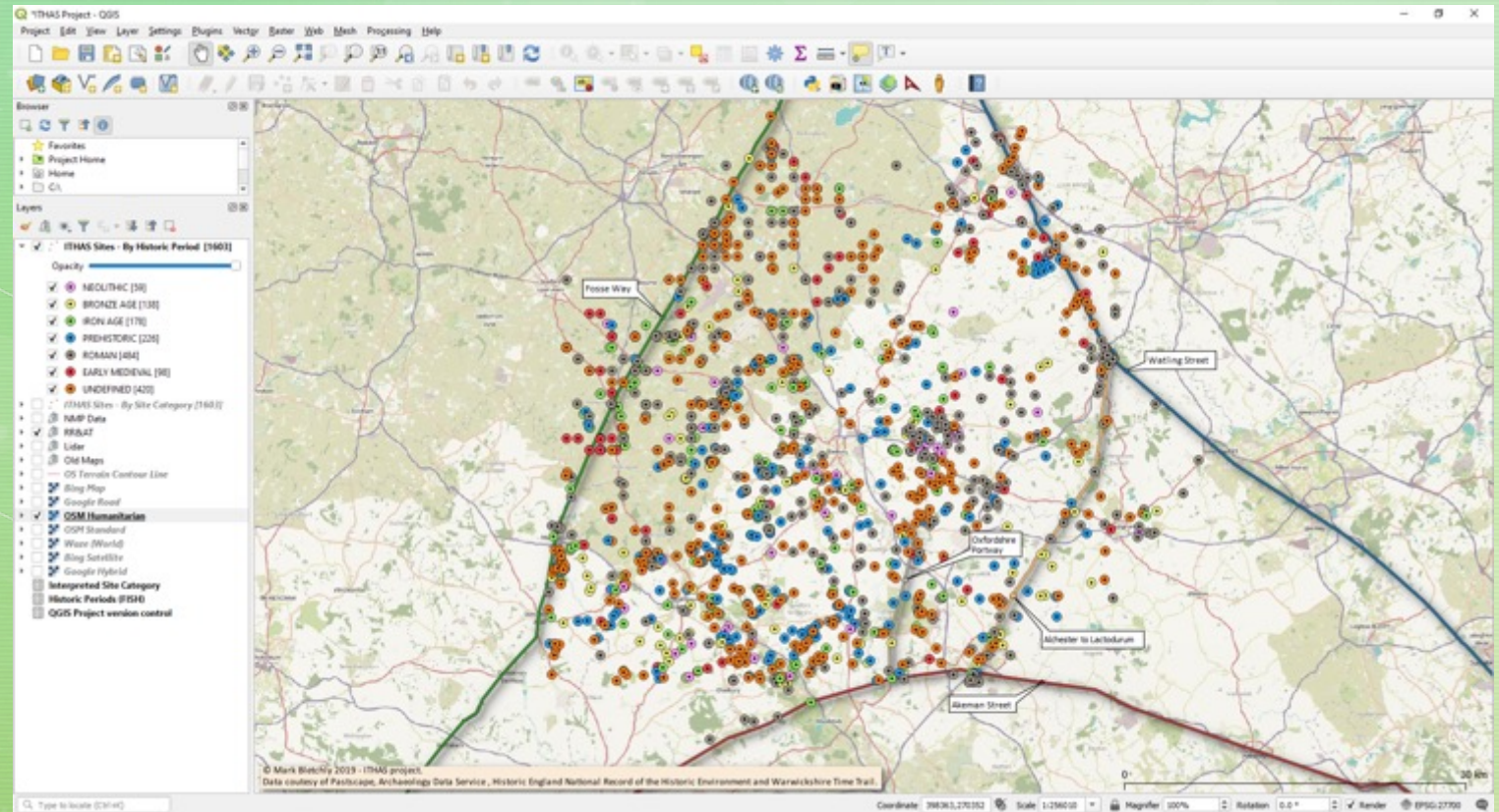
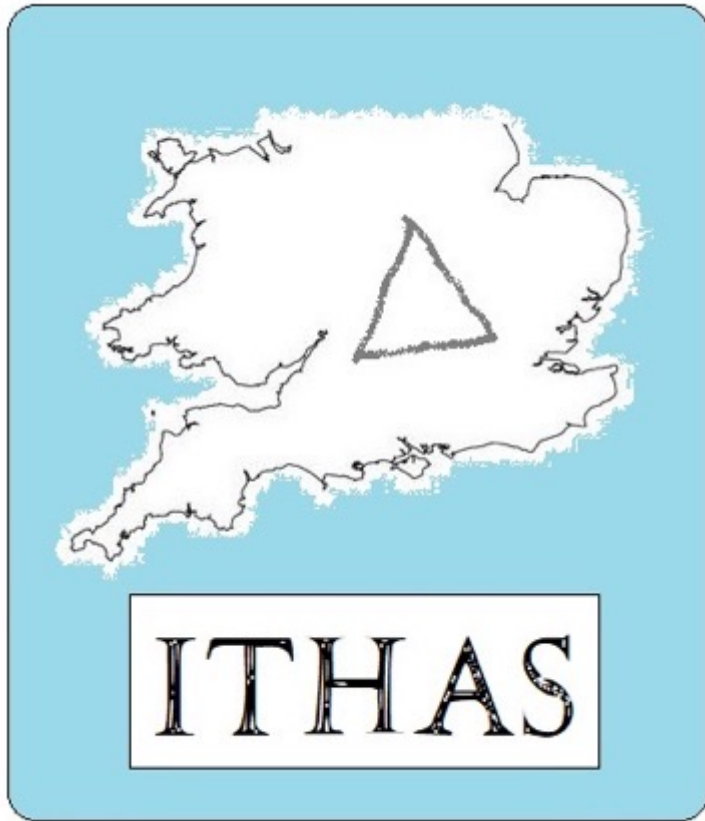
## Methodology, Standards and Guidance

- IoD and ClfA are collaborating on initiatives to promote the value of detecting within archaeology and the importance of archaeological standards in detecting.





# The ITHAS PROJECT



The Itinerary Triangle of The Fosse, Akeman and Watling Street