

Collections interacting with **society** and **each other**

IPS-161 Biological Collections

2020

Leif Schulman

Contents of lecture 9

1. **Public displays & outreach** – Educating society about natural history and nature's future
2. **Current and future international networking** – Constructs, organisations and the grand vision

1. PUBLIC DISPLAYS & OUTREACH

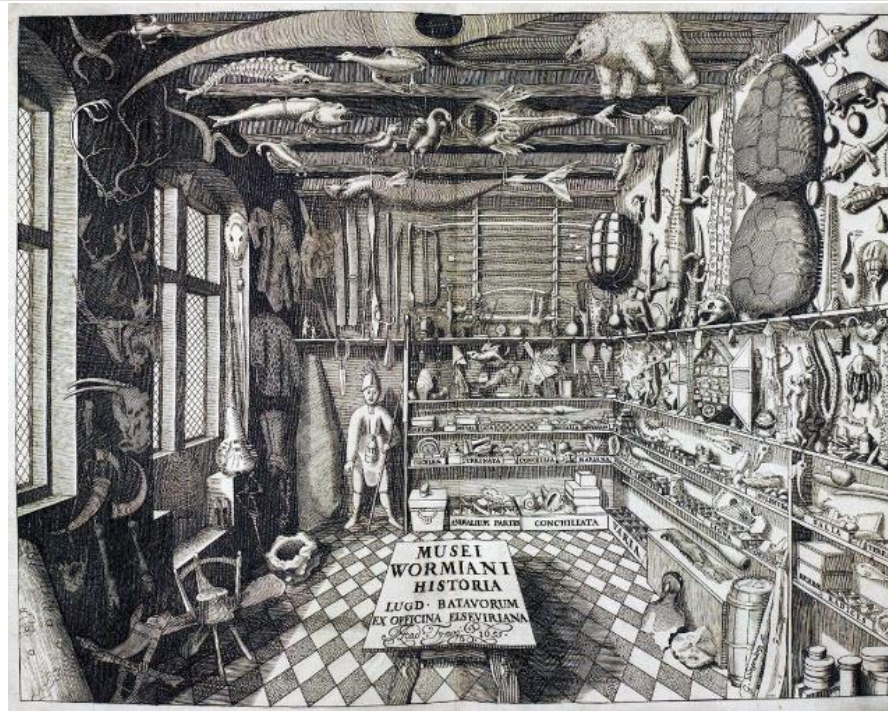
Educating society about natural history and nature's future

- Universities Act 72 § : *The Finnish Museum of Natural History is attached to the University of Helsinki and is responsible for the preservation, accumulation and display of the national natural history collections and for research and education relating to them.*

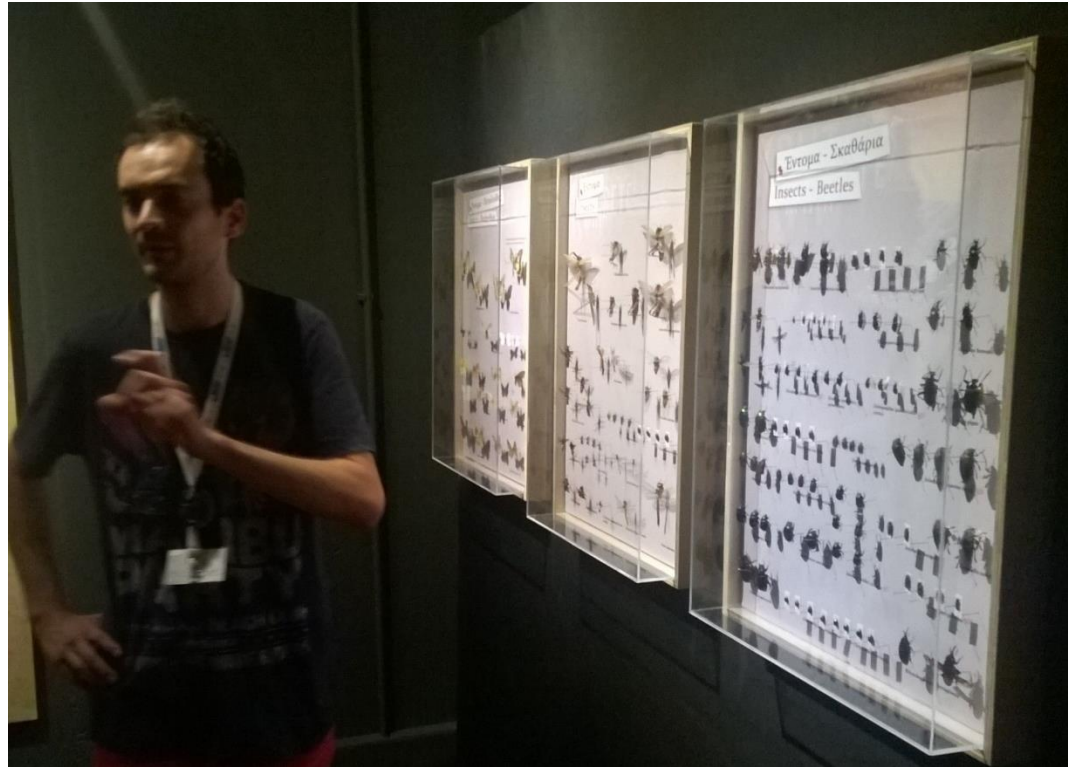
But how?

Origin: cabinets of curiosity

Origin: cabinets of curiosity



First actual natural history museums: systematic presentation of “all species”





Next step dioramas: 2D + 3D display, including taxidermy, to imitate nature (landscapes, habitat)



SEO
ORY

Prof. Leif Schulman, PhD
Director
Finnish Museum of Natural History





Third step: presenting the scientific collections and their role in research



Fourth step: displaying and explaining the work of collection institutions

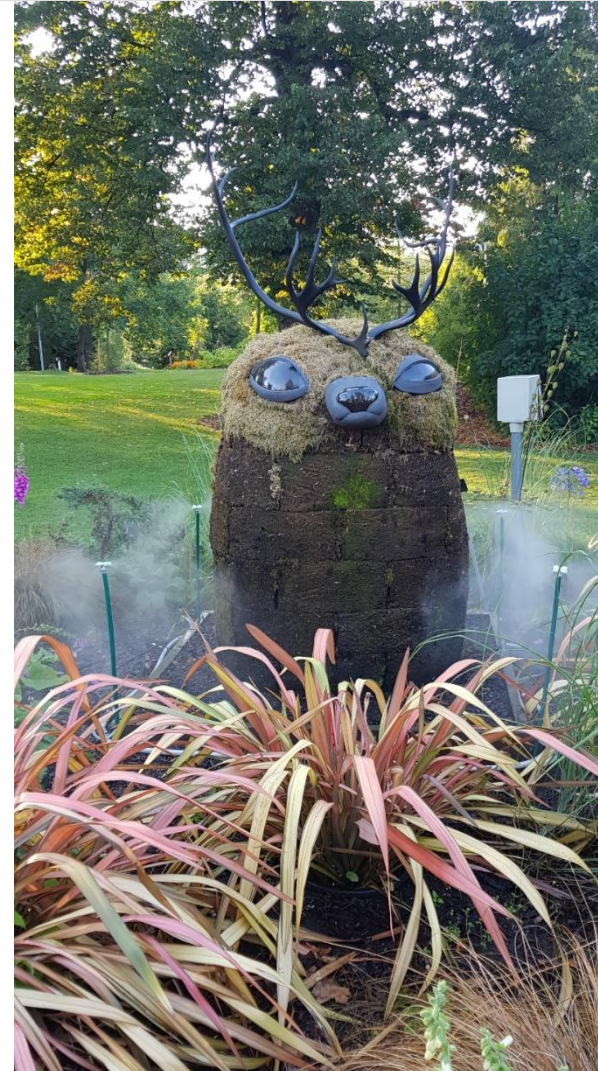
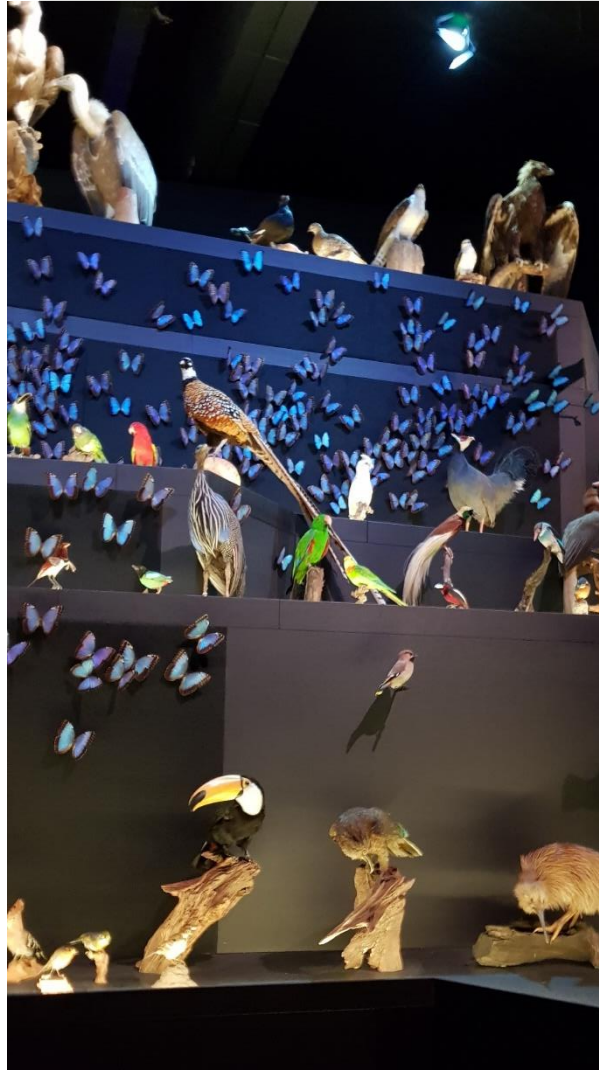
Questions

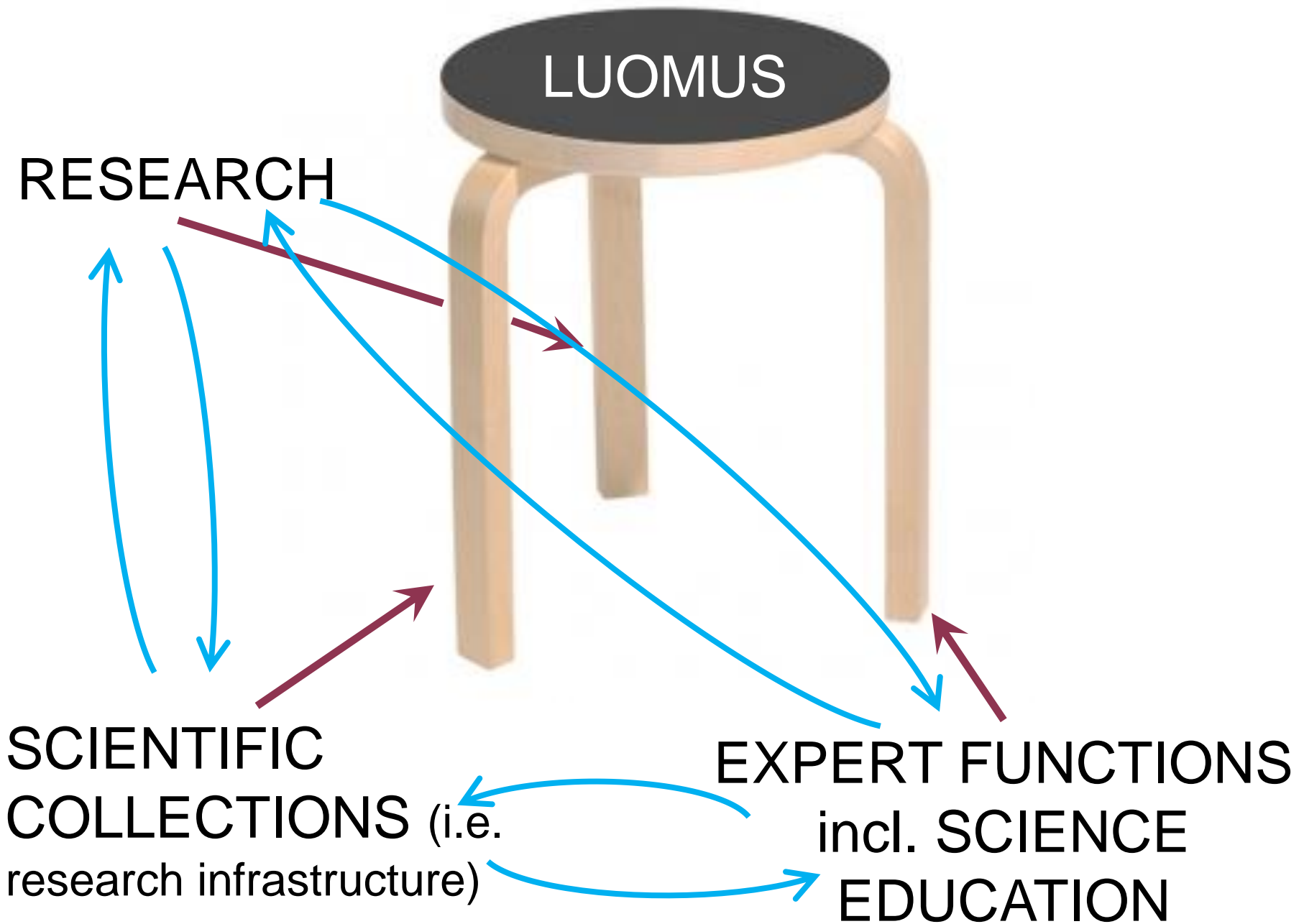
Why are there so many kinds of living things?
How is the world's natural diversity changing?

The collections and research we do here are all geared to answering some of the biggest and most complex questions we have – how the diversity of life evolved, and how it is changing.



Fifth step: artistic, awe-inspiring display; emotional impact rather than informative content





1. PUBLIC DISPLAYS & OUTREACH Summary

1. Cabinets of curiosity.
2. Dioramas imitating nature.
3. Presenting the scientific collections and their role.
4. Explaining the work at collection institutions.
5. Artistic, awe-inspiring display

Which type of exhibition is best?

Where should we go next?

2. CURRENT & FUTURE INTERNATIONAL NETWORKING

Constructs, organisations and the grand vision

- **The acronym soup:** CETAF, EBGC, BGCI, SPNHC, TDWG, GGBN, GBIF, SYNTHESYS, DiSSCo...
 - **Collaborative organisations / networks:** CETAF, BGCI, EBGC, SPNHC, TDWG, GGBN
 - **Projects:** SYNTHESYS+
 - **Research infrastructures (RIs):** GBIF, DiSSCo

2. CURRENT & FUTURE INTERNATIONAL NETWORKING

Constructs, organisations and the grand vision

- Collaborative organisations / networks
 - [CETAF](#): Consortium of European Taxonomic Facilities
 - [BGCI](#): Botanic Gardens Conservation International
 - [EBGC](#): European Botanic Gardens Consortium
 - [SPNHC](#): Society for the Preservation of Natural History Collections
 - [TDWG](#): Biodiversity Information Standards
 - [GGBN](#): Global Genome Biodiversity Network

2. CURRENT & FUTURE INTERNATIONAL NETWORKING

Constructs, organisations and the grand vision

- **Projects**
 - [SYNTHEsys](#): Synthesis of Systematic Resources
- **Research infrastructures (RIs)**
 - [GBIF](#): Global Biodiversity Information Facility
 - [DiSSCo](#): Distributed System of Scientific Collections

2. CURRENT & FUTURE INTERNATIONAL NETWORKING

Constructs, organisations and **the grand vision**



Distributed System of Scientific Collections

- Works for the **digital unification** of European natural science assets
 - common curation and access policies and practices
- Enables the transformation of a fragmented landscape into an **integrated knowledge base**
- The largest ever agreement between collection-holding institutions in the world.

DIGITALISATION

!!!

LUONNONTIETEELLINEN KESKUSMUSEO
NATURHISTORISKA CENTRALMUSEET
FINNISH MUSEUM OF NATURAL HISTORY

Prof. Leif Schulman, PhD
Director
Finnish Museum of Natural History

