



IPS-161

Demonstrations of
practicals

GROUP 2: MİLJA LAURILA, JULIA WRIGHT AND MARIA REIMAN

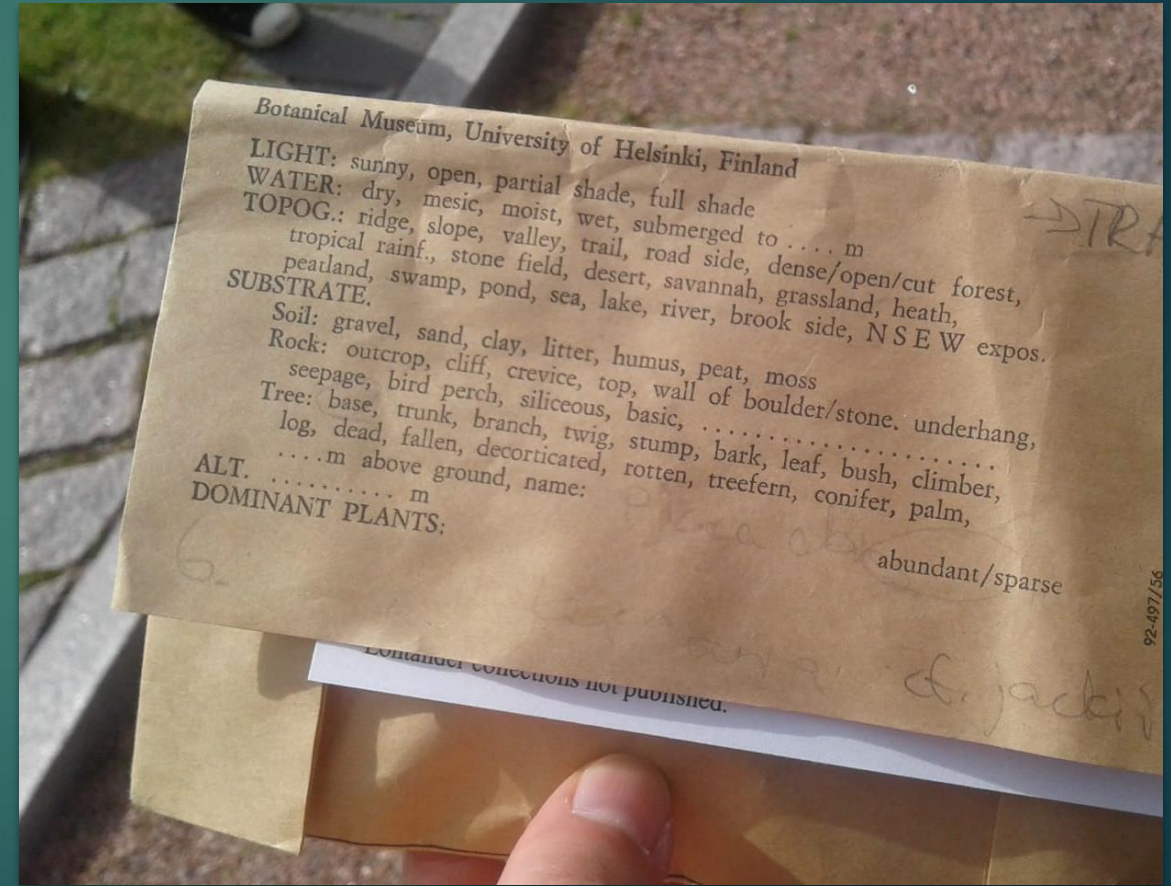
Lichen practicals

- ▶ Collecting
- ▶ Identification
- ▶ Preparing the herbarium specimen



Collecting

- ▶ What to bring with you?
 - ▶ Paper bags (one for each specimen!), map, compass, phone, notebook, pen, tools if needed.
 - ▶ Collection number (JWright2920-01)
- ▶ Writing down the data
 - ▶ Locality
 - ▶ Vegetation
 - ▶ Preliminary identification
 - ▶ Collection number, difference with every specimen
 - ▶ Be as specific as you can!





Identification

- ▶ On field Preliminary identification
 - ▶ Colour reagents
 - ▶ Hand lens
- ▶ Later
 - ▶ Literature
 - ▶ Microscope
 - ▶ Reference material

Finnish Museum of Natural History
Museum Botanical Universitatis, Helsinki (H)

Polycauliona polycarpa (Hoffm.) Frödén, Arup & Søchting

FINLAND. Prov. Uusimaa (U). Helsinki, Kaisaniemi Botanical
Garden. On a thin twig of *Symphoricarpos albus* var. *laevigatus*.
South side.

WGS84: 60.175076, 24.94488
02.09.2020 Leg. Maria Reiman
Collection ID: M1

Preparing the specimen

- ▶ Label –easy to do with good collection data
- ▶ In freezer for a week before adding to the collections

Useful links

- ▶ Coordinates
- ▶ <https://asiointi.maanmittauslaitois.fi/karttapaiikka/>
- ▶ The international plant names index
- ▶ <https://ipni.org/ipni/plantnamesearchpage.do>
- ▶ Author names
- ▶ <https://indexfungorum.org/names/names.asp>



Collections

- ▶ Digitizing: Kotka database
- ▶ Adding the specimen into collections
 - ▶ Alphabetically
 - ▶ In time order

Digitization & 3D

Digital scanning of a cat's (Felis catus) skull

Tools:

- ▶ 3D surface scanner & computer
- ▶ Powder
- ▶ Modelling clay

Process:

- ▶ Apply powder on the skull
- ▶ Insert the skull on the platform
- ▶ Insert the object into the scanner to begin scanning
- ▶ Fine tune the scanned result for a neat image
- ▶ Repeat the process in six different angles
- ▶ Combine the results for a full 3D model



Utilization:

- ▶ Remotely accessible data
- ▶ Space saving
- ▶ Accurate and easy measuring
- ▶ Time consuming process

Digital preservation of insects

Tools:

- ▶ Conveyor
- ▶ High resolution digital camera
- ▶ Scanning platform
- ▶ Tweezers
- ▶ Camera for leveling

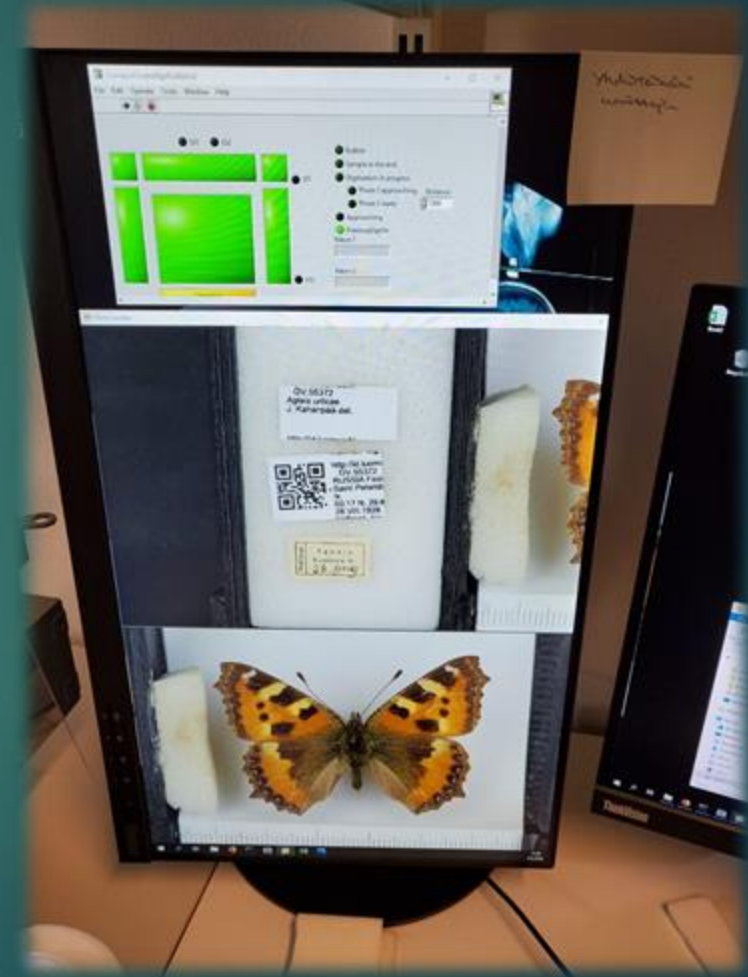


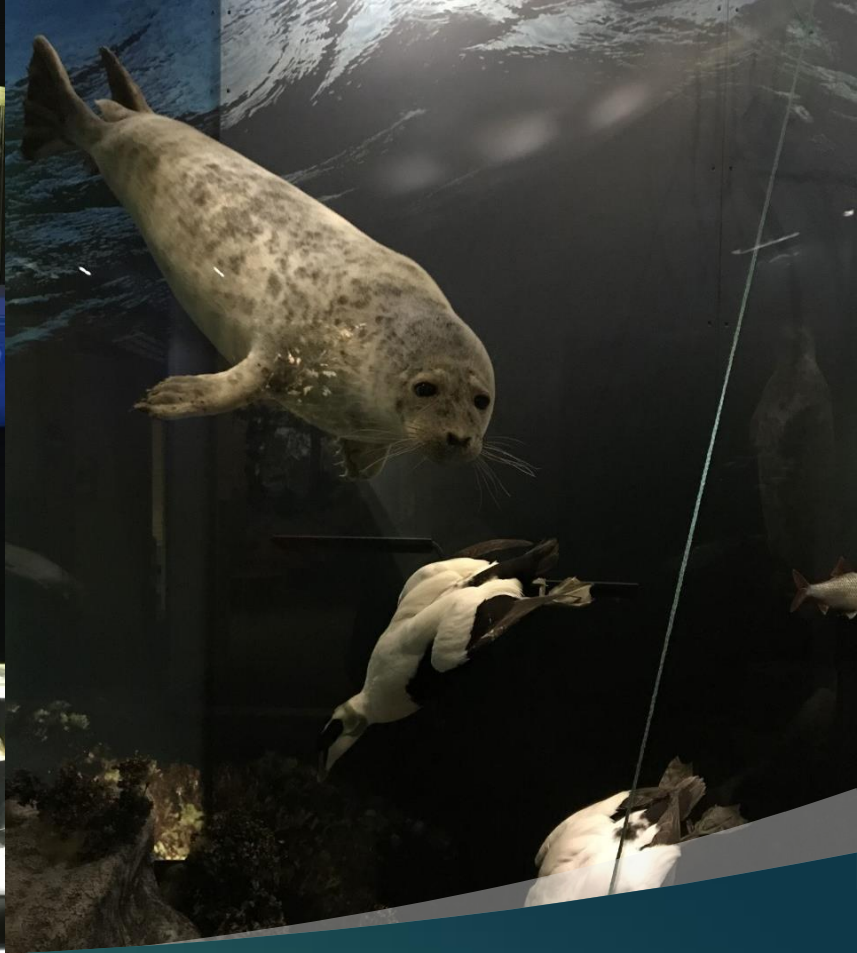
Process

- ▶ Pin the insect on the platform by the info labels
- ▶ Adjust the level of the subject
- ▶ Set the platform on the conveyor
- ▶ After the photoshoot remove the insect

Results

- ▶ Accessible online database
- ▶ Preservation
- ▶ High resolution images





Vertebrate practicals

OUR DAY AT THE KITCHEN OF ZOOLOGY

Vertebrate practicals

- ▶ Practicals led by Zoology Unit's Janne Granroth (Senior Museum Technician) and Ari Puolakoski (Chief Taxidermist). Introduction to the subject by Alexandre Aleixo (Curator of vertebrates).
- ▶ What we did
 - ▶ Getting to know different kind of vertebrate specimen collections
 - ▶ Preparing a skeleton specimen
 - ▶ Preparing a fish specimen (in alcohol)

Vertebrate collections

- ▶ One vertebrate individual can be converted into many specimens
 - ▶ Tissue -> DNA analysis
 - ▶ Wing
 - ▶ Skeleton
 - ▶ Skin
 - ▶ Egg
- ▶ Mammals and birds are usually presented as skins or skeletons, and sometimes as stuffed animals
- ▶ Fishes, amphibians, and reptiles are kept in alcohol



Preparation of a scientific skeleton specimen

1. Collecting
 - Active/passive collecting
 - Hunting, mistnets, road-kills
2. Individual arrives to the Museum
 - freezer
 - Entry label with collecting data
3. Recording of morphological characteristics
 - Species/sex/age determination
 - Body mass
 - Wingspan
 - Length
 - Genus/species-specific characteristics for eg. subspecies determination



4. Skeleton conservation

Skin off

Recording of internal characteristics

Sex confirmation

Amount of fat

Bursa of Fabricius

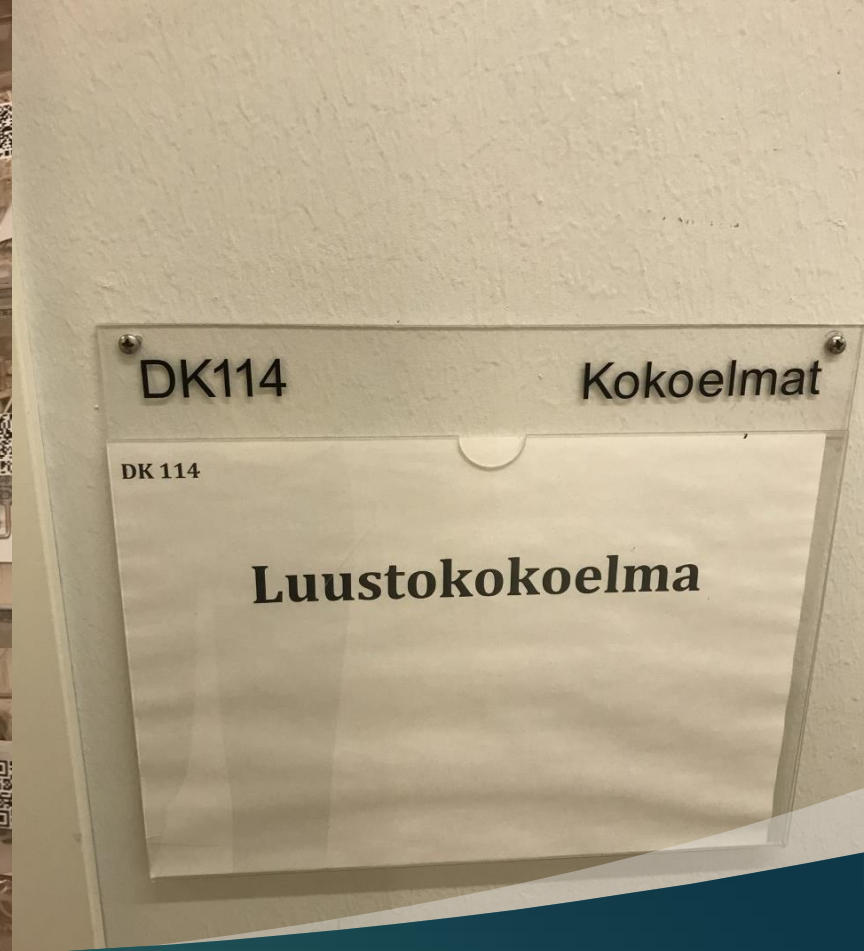
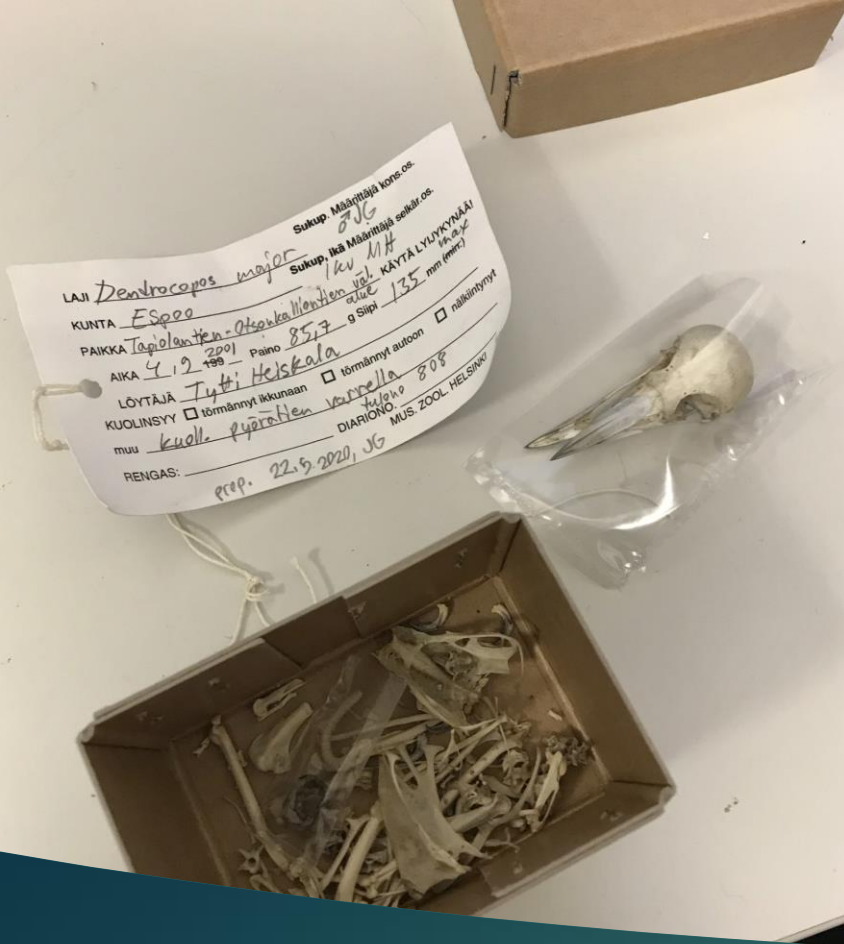
Soft tissues off

Beetle cleaning (*Dermestes maculatus*)

Freezing

Removal of fat from bone surface





5. Preservation at the skeleton collection
 Gets a specimen label and Kotka-ID